

Royal Thai Armed Forces Joint Logistics

By

International Logistics Support Division, J4 RTARFHQ

as of May 2009

Ministry of Defence (MOD)

- **Organizational Structure**
- **Joint Logistics**

Ministry of Defence

```
graph TD; A[Ministry of Defence] --> B[Minister's Office]; A --> C[Office of the Permanent Secretary for Defence]; A --> D[Royal Aide de Camp Department]; A --> E[Royal Thai Armed Forces];
```

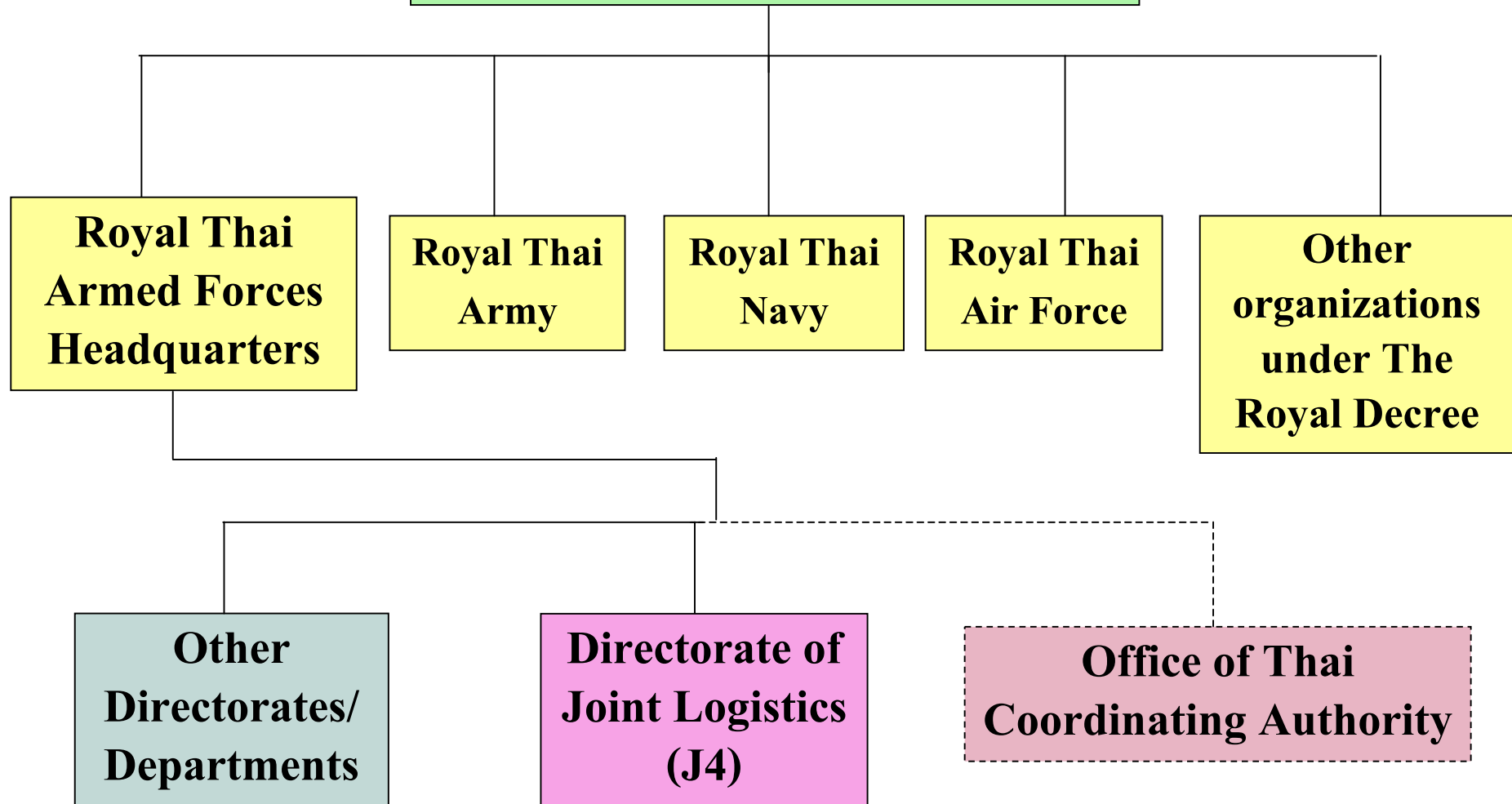
Minister's Office

**Office of the
Permanent
Secretary for
Defence**

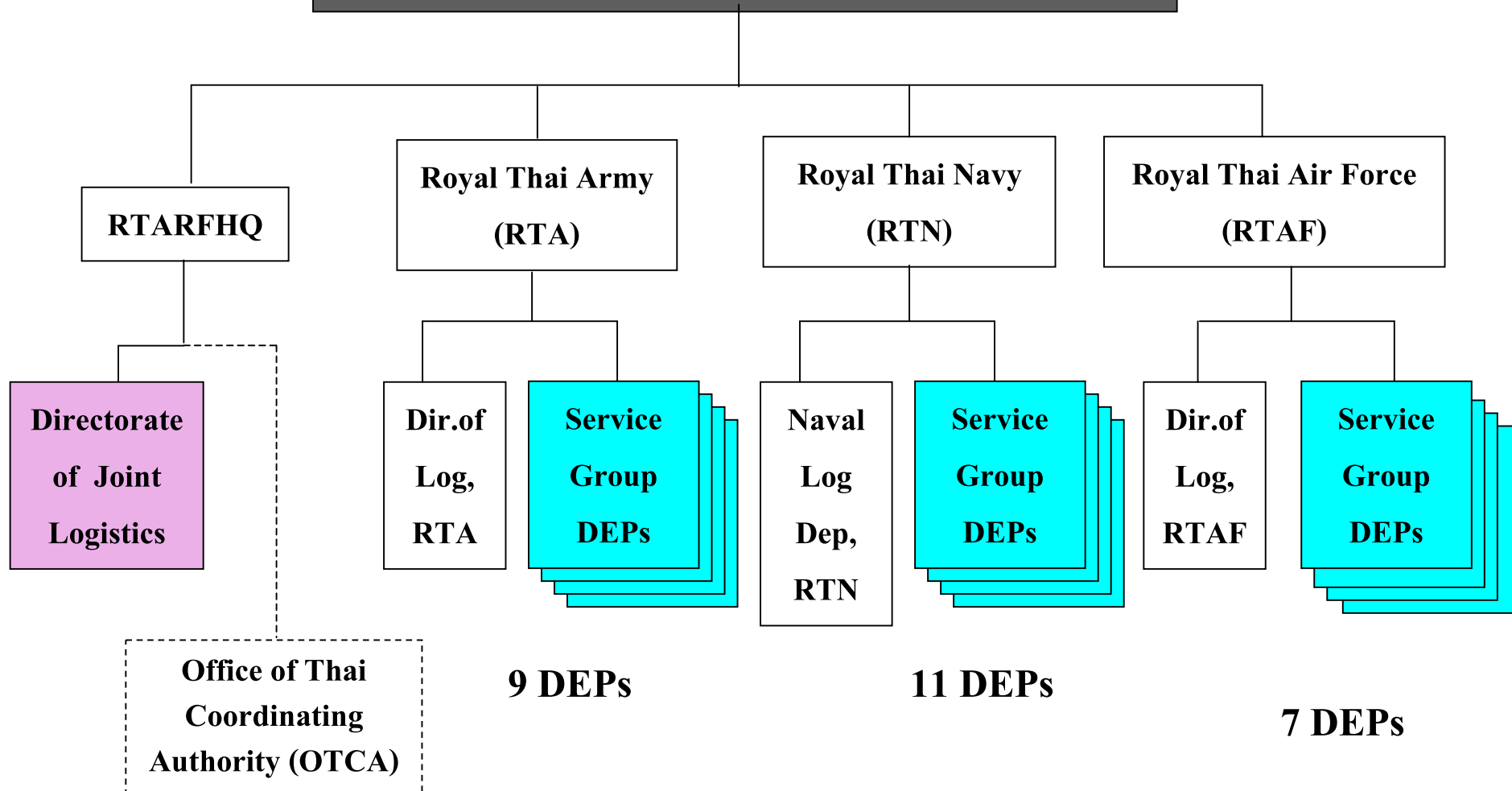
**Royal Aide de
Camp
Department**

**Royal
Thai
Armed
Forces**

Royal Thai Armed Forces



Royal Thai Armed Forces (RTARF)



Royal Thai Armed Forces Headquarters

Directorate of Joint Logistics

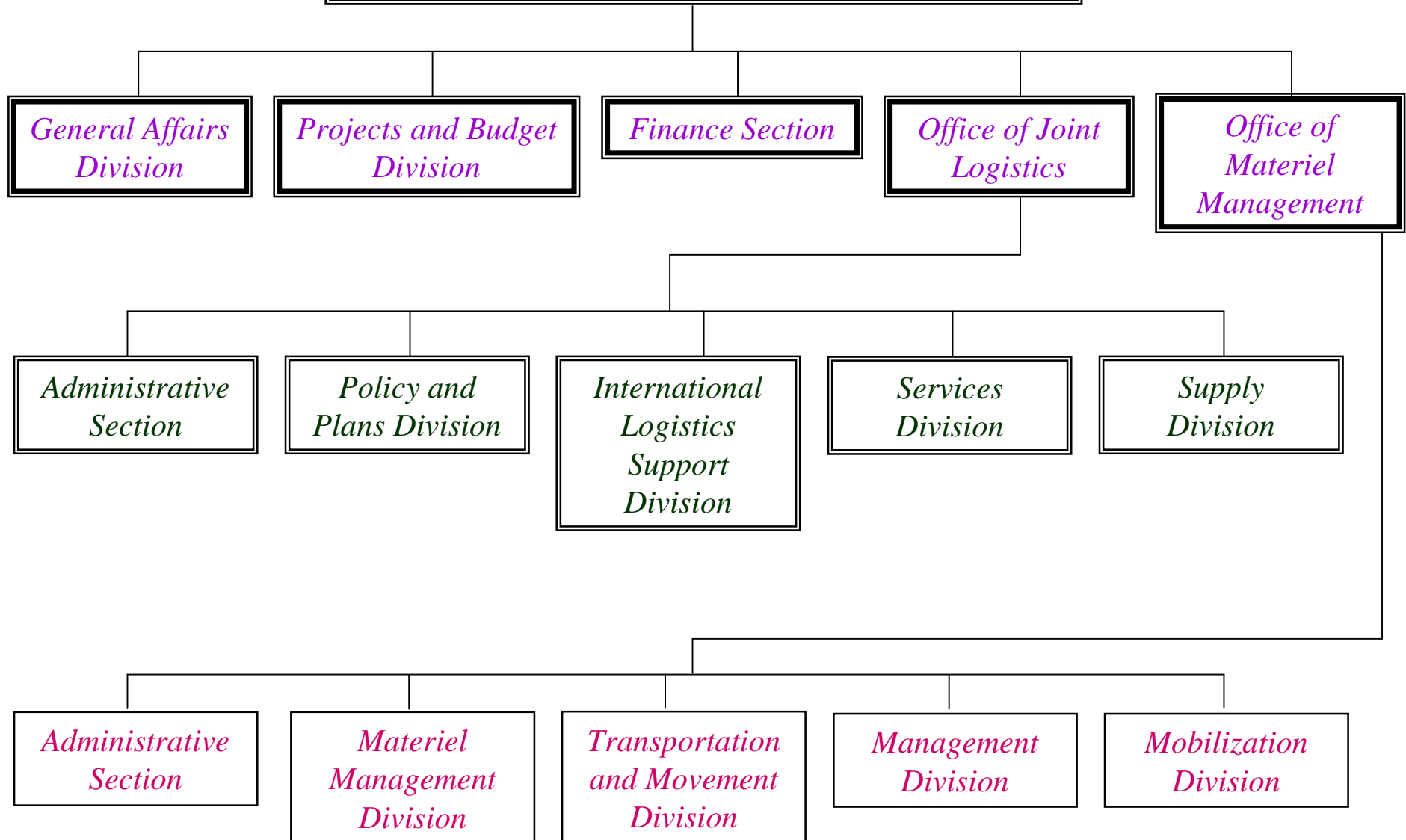
Responsible for logistics issues for all units in RTARFHQ

support RTA, RTN and RTAF beyond their capabilities

Office of Thai Coordinating Authority

coordinating on logistics support with other countries

Directorate of Joint Logistics (J4)



Divisions responsible for direct logistics tasks :

- Supply

- From Private Sector => **Supply Division**
- Mobilization => **Mobilization Div**
- From friendly Countries /allies => **International Logistics Support Div.**

- Maintenance

- According to agreements/arrangements => **International Logistics Support Div.**
- Without Agreements /arrangements => **Supply Div.**

- Transportation => **Transportation and Movement Div.**

- Base Development/General Engineering
 - Health Services
- } **Services Div.**

Divisions responsible for non-direct logistics tasks

- Policy, plans, exercise => **Policy and Plans Div.**

- Item codification /cataloguing (NCS) => **Materiel**

Management Div.

- Administer regulations, directives, doctrine concerning logistics => **Management Div.**

- Project and budget => **Project and Budget Div.**

- Administrative, personnel, welfare services => **General Affairs Div.**

RTARF Joint Logistics Role

- **Cross-Servicing Support**
- **Request support from civil agencies, state enterprises and the private sector.**
- **Request support from other countries**